



## Quality that meets the eye – and the ear

Kenwood's new lineup of receivers offers a beautiful, unified look that matches the stunning audio quality they deliver. But more than just good looks, Kenwood's 2005 design philosophy brings greater ease of operation as well as an enhanced set of features. These include the AC Drive, G-Analyzer, AAC capability, O.D.D. D/A System and much more to enhance your in-car entertainment with far greater convenience and higher audio fidelity. Nowhere else can you find such a comprehensive range of features and functions – all with easy intuitive control – allied with the ultimate in pristine audio quality and packaged in attractive units that integrate superbly with any car interior.



 **The look of high performance**

Kenwood's entire 2005 CD/R lineup features an exciting new design theme aimed at providing a unified feeling, with quality looks that grace any vehicle. Particular attention was paid to the shape and feel of the panel, and the materials employed. In addition, Kenwood achieved unprecedented operating ease. The result is a lineup that appeals to drivers of any age and brings pride of ownership to all.

 **New rotary encoder and cross control toggle**

All models boast a rotary encoder and cross control toggle to assure extreme ease of operation. These controls operate features previously available only on higher-end models to provide intuitive multifunction operation that everyone can enjoy. In particular, budget models benefit from control of audio functions that is easier than ever.



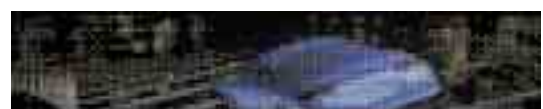
 **High-intensity, wide-angle displays**

Multicolor OEL	Multicolor FL
Fine Dot FL	FL

Top-end models are equipped with the most advanced OEL (Organic Electro-Luminescent) display panels providing 4096-colour capability. Thanks to their high contrast, wide field of view and ultra-fast response rate, these panels allow display of a large variety of attractive moving images to add a dimension of visual enjoyment to the system. Mid-range models feature multi-colour (64-colour) full-dot displays capable of showing moving images as well as a 3-line multi-text information display. Entry models employ high-intensity 14- or 7-segment FL displays offering excellent visibility and the look of a higher-end model.



OEL



Dot FL



FL

## Innovative AC (Advanced Codec) Drive

ACD<sub>rive</sub>

Employing the Media Manager PC application from PhatNoise, this unique function provides integrated management of compressed music files recorded on CD-R/RW. Features of the provided PhatNoise Media Manager (PMM) include CD ripping, CD encoding with AAC (MPEG4 AAC-LC)/WMA, editing such as the creation of playlists, input of tag information and downloading of music information from CDDB Internet servers, as well as recording of ACDrive data on the CD. When CDs created using this system are played in the car, files can be retrieved via modes such as Playlist, Genre, Artist, Album and Folder, or by using the letter seek function to select by the initial letter of the file name. Files can also be programmed for sequential playback in any desired order. In addition, the Voice Index function gives audio confirmation of the play mode and file names.



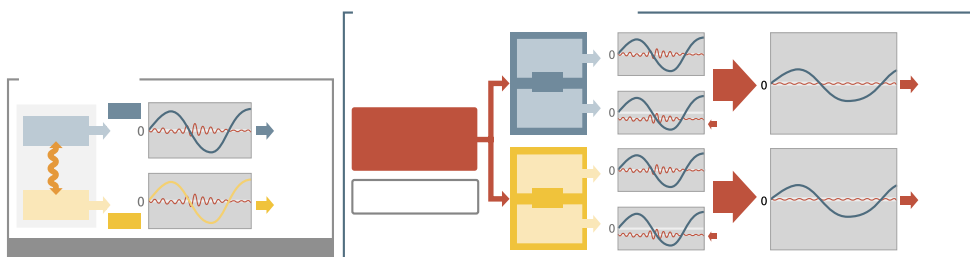
ACDrive function is powered by PhatNoise mCD technology  
 Languages available; English/French/German/Dutch/Italian/Spanish  
 Required operating environment; Microsoft Windows 98SE, ME, 2000 or XP, PC incorporating a 500MHz or better Pentium II processor, 128MB RAM or more, CD-R/RW Burner, Internet connection  
 For updated information refer to the following site; <http://www.kenwood.mediamanager.jp/>



## High-performance DSP with O.D.D. D/A system

O.D.D.  
D/A SYSTEM

Built-in multifunction DSP includes a 4-band parametric equalizer, high-pass and low-pass filters with 13 selectable cutoff frequencies, digital time alignment circuitry with independent control of front/rear/subwoofer, and SRS WOW DIGITAL with FOCUS/TRUBASS/SRS 3D functions to offer complete control of music. What's more, Kenwood's Sound Management System allows selection of the optimum acoustic field according to your vehicle and speaker types. Finally, Kenwood's unique O.D.D. (Offset Dual Differential) D/A system virtually eliminates digital-to-analogue conversion errors for superior audio quality.



## High-quality 24-bit D/A converter

24Bit DAC

ACDrive models incorporate a 24-bit Burr-Brown D/A converter as used in high-end audiophile equipment. This standalone chip avoids the noise inherent to converters built into DSP chips to deliver the most delicate details of music with crystal clarity. Digital-to-analogue conversion is based on the advanced segment method which applies multi-bit processing to the top 6 bits – the "meat" of the sound – and single-bit processing to the lower 18 bits which provide the finer sonic nuances. The result is music of genuine power and authority with all the subtle details beautifully reproduced.



**Burr-Brown Products**  
from Texas Instruments

## Installer Memory, User Memory and Backup Memory

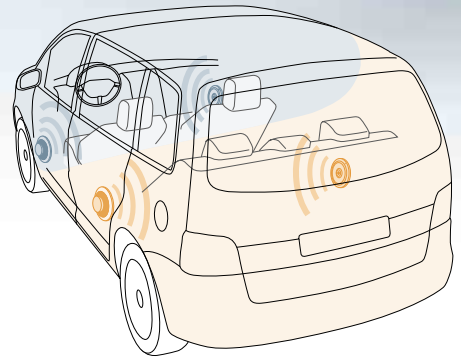
Installer Memory

The professional who installs your Kenwood car audio system sets the optimum soundfield for your vehicle and stores it in the Installer Memory for instant recall at any time. High-end models with built-in DSP also incorporate a User Memory allowing you to store your own custom soundfields. In addition, Backup Memory automatically stores radio station frequency and other data at regular intervals. Data held in these memories is maintained even after the battery is changed or the reset button is pressed.

## New Dual Zone function



The Dual Zone function lets you output the audio of a music source such as CD or radio from the front speakers, while the rear speakers deliver audio from the component connected to the AUX input. Models without a built-in AUX input can use a component connected to the auxiliary input adaptor (CA-C1AX connected to the changer control terminal) as the rear speaker audio source. A separate volume control for the rear speakers is added to allow independent volume control of front and rear speakers to create different "audio spaces" with different programme sources for the front and rear seats. A reverse function is also provided to offer easy switching of front and rear audio.



## Interface kit (KCA-iP500) for iPod connection



Enjoy in-car entertainment from your iPod music collection. An interface cable and black box allow connection of an Apple Computers iPod to the changer control terminal of the head unit for playback over the vehicle sound system. What's more, you also get display of the Playlist, Genre, Artist and Album Names on the head unit for greater convenience.



## AAC compatibility



AAC (Advanced Audio Coding) provides more efficient audio compression with higher quality than ever before. Far superior to MP3, AAC realizes smaller files with virtually no compromise in audio quality, and also features an improved decoding algorithm to decode data with less processing power.

Kenwood head units are compatible with the MPEG4 AAC-LC format, ".m4a" files.

### DATA COMPATIBILITY

Model Name	XXD-01D/KDC-PSW9531/W8531/W7531/W6531/W808		
Multi_Sessin	●	●	●
File System (Windows)			
ISO9660 Level 1,2	●	●	●
ISO9660 Level 3	×	×	×
Romeo	●	●	●
Joliet	●*1	●*1	●*1
Long File Name	●	●	●
File System (Macintosh)	×	×	×
File System (UNIX)	×	×	×
Bit Rate	8-320kbps	8-320kbps	8-320kbps
Variable Bit Rate	●	●	●
Sampling Frequency	16-48kHz	8-48kHz	8-48kHz
Joint STEREO	●	●	●
ID3 Tag (Ver.1.x)	●	●	●
ID3 Tag (Ver.2.x)	●	×	×
Bit Rate	48-192kbps	48-192kbps	48-192kbps
Variable Bit Rate	●	●	●
Sampling Frequency	32-48kHz	32-48kHz	32-48kHz
Professional	×	×	×
Lossless	×	×	×
Voice	×	×	×
WMA Tag Content Description	●	●	●
WMA Tag Extended Content Description	●	×	×
Bit Rate	8-320kbps	32-320kbps	—
Sampling Frequency	16kHz-48kHz	16kHz-48kHz	—
.m4a	●	●	—
.m4p	×	×	—
DRM Files	×	×	—
2 Channel	●	●	—
Multi Channel	×	×	—
ID3 Tag (Ver.2.x)	×	×	—
iTunes m4a Meta-data (Song info.)	●	×	—
M3U (Play List)	×	×	×
Customization (File Stream Output)	●	●	×
Max. number of folders (per disc)	100 folders	100 folders	50 folders*2
Max. number of files (per folder)	4096 files	255 files	255 files*2
CD-DA/MP3 data mixed DISC *3	▲	▲	▲
CD-DA/WMA data mixed DISC *3	▲	▲	—
CD-DA/AAC data mixed DISC *3	▲	▲	—
MP3/WMA data mixed DISC	●	●	●
MP3/WMA/AAC data mixed DISC	●	●	—

## MP3/WMA compatibility



These are two of the most popular audio compression formats. MP3 can reduce audio files to about 1/10th size while maintaining audio quality close to the original, while the WMA system achieves file sizes as small as half that of MP3. Kenwood's wide format compatibility means you can enjoy an even broader range of compressed music in your audio library.

Folder Name	● (128byte)	● (64byte)	● (64byte)
File Name	● (128byte)	● (64byte)	● (64byte)
ID3 Tag (ver.1.x / ver.2.x)			
Title	●/●	●/×	●/×
Artist	●/●	●/×	●/×
Album	●/●	●/×	●/×
Year	×/×	×/×	×/×
Genre	×/×	×/×	×/×
Track	×/×	×/×	×/×
Comment	×/×	×/×	×/×
WMA Tag (Content Description)			
Title	●	●	●
Author	●	●	●
Copyright	×	×	×
Description	×	×	×
Rating	×	×	×
WMA Tag (Extended Content Description)			
WM/Album Title	●	×	×
iTunes m4a Meta-data (Song info.)			
Title	●	×	—
Artist	●	×	—
Album	●	×	—
Genre	×	×	—
ID3 Tag (Ver.2.x)	×	×	—

\*1: Output of SVD information available

\*2: Up to 512 files and folders can be managed in total

\*3: Play only the data form of 1st track in the Disc

**25<sup>th</sup> Anniversary**

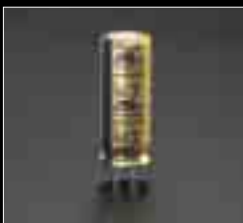


**NEW XXV-01D**

AAC/WMA/MP3/CD Receiver with Changer Control

\* Available early summer 2005

**Special 25th anniversary capacitors**



Products created to celebrate the 25th anniversary feature specially developed power supply capacitors offering superior audio performance and high capacity. The aluminium electrolytic capacitors in this model were selected after extensive testing to provide the best matching. In particular, their leak

current characteristics are drastically improved to provide higher audio quality over a longer life and allow more natural sound reproduction that is closer to the original.

**OFC Cables**



To ensure top quality and extreme performance from this special product, high quality OFC cables are used for the pre-outs and AUX inputs. OFC stands for Oxygen Free Copper, which is well known for clean sonic performance and is widely used in hi-end audio equipment. The strands

are made from near 100% oxygen free copper, a process which completely removes any trace of oxygen from the wire surface during manufacture. Thanks to these improved electron flow cables, superior sound quality is assured.



**NEW**

# KDC-PSW9531/Y

AAC/WMA/MP3/CD Receiver with Changer Control

This is a State-of-the-art top of the line model you will be proud of! The colour OEL display offers excellent high contrast and brightness, giving heightened 3D realism. For complete sound control you have a built-in DSP, featuring 4-band parametric EQ, DTA, Sound Management System, and SRS WOW Digital, letting you personalize the sound to your own taste.



XXV-01D



KDC-PSW9531

Motorized SLIDE	Multicolor OEL	Display Customize	Spe-Ana	50Wx4 MOSFET	5V PREOUTS	3 GOLD PREOUTS	P-EQ
DTA	SOUND MANAGEMENT SYSTEM	SRS WOW DIGITAL	O.D.D. D/A SYSTEM	DIGITAL Es+	System Q EX	Installer Memory	24Bit DAC
ACDrive	AAC	WMA MP3	CD-RW READY	RDS RADIO TEXT	K3i TUNER	DUAL ZONE	OEM Wired Remote
OEM Display Output	AUX RCA IN	DAB Ready	AMP Control	DUAL CHGR Cont.	REMOTE Supplied		

Ready for iPod

AUDIO										TUNER
SPECIFICATION										
Max Power	Preout	Preout Output Level	AUX RCA Input	System E's	System Q	Built-in Amp Cut Off	RDS			
50W x 4 MOSFET	x 3(Gold)	5.0V	●	Digital E's+	Q-EX	●	Radio Text			
CD			CHANGER		GENERAL					
24 Bit DAC	ACDrive	AAC	MP3/WMA	Dual Changer Control	Disc Name Preset	Panel Angle Adjust	Selectable Key illumi. (Red/Green)	Dual Tel/Nav Mute	OEM Wired Remote Out	Remote Control
●	●	●	●	●	●	●	●	●	●	Supplied



NEW

## KDC-W8531/Y

AAC/WMA/MP3/CD Receiver with Changer Control

Ready for iPod

A classic high quality look with a distinctive aluminum face-plate! Incorporating the 24bit Burr Brown D/A converter for great sound quality and ACDrive for advanced file management. You can use it's 3 RCA pre-outs (5.0V) for expansion of your system. Supplied with a full function remote control.

Motorized SLIDE	Multicolor FL	Display Customize	Spe-Ana	50Wx4 MOSFET
5V PREOUTS	3 PREOUTS	SYSTEM E's+	System Q <sup>EX</sup>	Installer Memory
24Bit DAC	ACDrive	AAC	WMA MP3	CD-R/RW READY
RDS RADIO TEXT	K3i TUNER	DUAL ZONE	OEM Wired Remote	OEM Display Output
AUX RCA IN	DAB Ready	AMP Control	DUAL CHGR Cont.	REMOTE Supplied

NEW

## KDC-W7531/Y

AAC/WMA/MP3/CD Receiver with Changer Control

Ready for iPod



Eye-catching yet elegant looks for your dash-board! Comes with full high end features such as 24bit Burr Brown D/A converter for great sound quality and ACDrive for advanced file management.

Motorized SLIDE	Multicolor FL	Spe-Ana	50Wx4 MOSFET	2.5V PREOUTS
3 PREOUTS	SYSTEM E's+	System Q <sup>EX</sup>	Installer Memory	24Bit DAC
ACDrive	AAC	WMA MP3	CD-R/RW READY	RDS RADIO TEXT
K3i TUNER	DUAL ZONE	OEM Wired Remote	OEM Display Output	AUX RCA IN
DAB Ready	AMP Control	DUAL CHGR Cont.		

### SPECIFICATION

	AUDIO							TUNER
	Max Power	Preout	Preout Output Level	AUX RCA Input	System E's	System Q	Built-in Amp Cut Off	RDS
KDC-W8531/Y	50W x 4 MOSFET	x 3	5.0V	●	●	Q-EX	●	Radio Text
KDC-W7531/Y	50W x 4 MOSFET	x 3	2.5V	●	●	Q-EX	●	Radio Text
KDC-W7031/Y	50W x 4 MOSFET	x 2	2.5V	—	●	Q-EX	●	Radio Text

**NEW**

# KDC-W7031/Y

AAC/WMA/MP3/CD Receiver with Changer Control

Ready for iPod



An impressive multicolour FL display offers a wide range of vivid animation. The Brand new G-Analyzer function will enable your car to display information like lateral G-force and acceleration.

Motorized SLIDE	Multicolor FL	G-Analyzer	50Wx4 MOSFET	2.5V PREOUTS
2 PREOUTS	SYSTEM Es+	System EX	Installer Memory	AAC
WMA MP3	CD R/W READY	RDS RADIO TEXT	K3i TUNER	DUAL ZONE
OEM Wired Remote	OEM Display Output	DAB Ready	AMP Control	DUAL CHGR Cont.

## G-Analyzer

G-Analyzer

KDC-W7031 incorporates an acceleration sensor powering G-Graphic that displays lateral G-forces on the vehicle, G-Meter that shows vertical and lateral G, G-Counter that calculates acceleration and displays it over time, and a stopwatch function to add greater entertainment to sporty driving.



CD				CHANGER		GENERAL				
24 Bit DAC	ACDrive	AAC	MP3/WMA	Dual Changer Control	Disc Name Preset	Panel Angle Adjust	Selectable Key illum. (Red/Green)	Dual Tel/Nav Mute	OEM Wired Remote Out	Remote Control
●	●	●	●	●	●	●	●	●	●	Supplied
●	●	●	●	●	●	●	●	●	●	Optional
-	-	●	●	●	●	●	●	●	●	Optional



NEW

# KDC-W6531/Y

AAC/WMA/MP3/CD Receiver with Changer Control

Ready for iPod



A brand new technology ACDrive is incorporated in this unit. This will enable you to burn a CD with the supplied PhatNoise Media Manager software. Experience an advanced file management system using various play modes and the Voice Index function that couldn't be easier.

Motorized SLIDE	FL	50Wx4 MOSFET	2.5V PREOUTS	2 PREOUTS
SYSTEM Es+	System Q	Installer Memory	24 Bit DAC	ACDrive
AAC	WMA MP3	CD-RW READY	RDS RADIO TEXT	K3i TUNER
OEM Wired Remote	OEM Display Output	DAB Ready	AMP Control	DUAL CHGR Cont.

NEW

# KDC-W6031/Y

AAC/WMA/MP3/CD Receiver with Changer Control

Ready for iPod



This model introduces our motorized slide down mechanism. Fully featured, it plays back MP3 & WMA files and the new format AAC-LC ".m4a" files.

Motorized SLIDE	FL	50Wx4 MOSFET	2.5V PREOUTS	2 PREOUTS
SYSTEM Es+	System Q	Installer Memory	AAC	WMA MP3
CD-RW READY	RDS RADIO TEXT	K3i TUNER	OEM Wired Remote	OEM Display Output
DAB Ready	AMP Control	DUAL CHGR Cont.		

## SPECIFICATION

	AUDIO							TUNER
	Max Power	Preout	Preout Output Level	AUX RCA Input	System E's	System Q	Built-in Amp Cut Off	RDS
KDC-W6531/Y	50W x 4 MOSFET	x 2	2.5V	-	●	●	●	Radio Text
KDC-W6031/Y	50W x 4 MOSFET	x 2	2.5V	-	●	●	●	Radio Text
KDC-W808	50W x 4 MOSFET	x 3	5.0V	●	●	Q-EX	●	Radio Text
KDC-W707/Y	50W x 4 MOSFET	x 2	2.5V	-	●	●	●	Radio Text

**D-MASK+**  
State-of-the-art security



Switch on the ignition and the D-MASK+ display and control panel revolve into view, putting an impressive selection of new and powerful Kenwood features at your command. Turn off the ignition, and you can either remove the faceplate and take it with you – thereby disabling the system – or you can let the motor-driven D-MASK+

completely revolves to hide the system behind an elegant black panel. In addition to this automatic "camouflage" mechanism and detachable faceplate, D-MASK+ also features extra protection with a personalized four-digit security code.

**NEW**

# KDC-W808

AAC/WMA/MP3/CD Receiver with Changer Control

Ready for iPod



\* Available summer 2005

High performance D-MASK+ unit. Incorporating the 24bit Burr Brown D/A converter for great sound quality and ACDrive for advanced file management. You can use the 3 RCA pre-outs (5.0V) for expansion of your system by adding external amplifiers and speakers.

<b>D-MASK+</b>	<b>Fine Dot FL</b>	Spe-Ana	<b>50Wx4 MOSFET</b>	<b>5V PREOUTS</b>
<b>3 PREOUTS</b>	SYSTEM <b>Es+</b>	System <b>EX</b>	Installer Memory	<b>24 Bit DAC</b>
<b>ACDrive</b>	<b>AAC</b>	<b>WMA MP3</b>	<b>CD-RW READY</b>	<b>RDS RADIO TEXT</b>
<b>K3i TUNER</b>	DUAL ZONE	OEM Wired Remote	OEM Display Output	<b>AUX RCA IN</b>
<b>DAB Ready</b>	<b>AMP Control</b>	DUAL CHGR Cont.		

**NEW**

# KDC-W707/Y

AAC/WMA/MP3/CD Receiver with Changer Control

Ready for iPod



\* Available summer 2005

Entry level D-MASK+. Turn on the ignition key, and the front panel will appear. Turn off the engine, and you can automatically mask it, or take the front panel with you for greater security.

<b>D-MASK+</b>	<b>Fine Dot FL</b>	Spe-Ana	<b>50Wx4 MOSFET</b>	<b>2.5V PREOUTS</b>
<b>2 PREOUTS</b>	SYSTEM <b>Es+</b>	System <b>EX</b>	Installer Memory	<b>AAC</b>
<b>WMA MP3</b>	<b>CD-RW READY</b>	<b>RDS RADIO TEXT</b>	<b>K3i TUNER</b>	DUAL ZONE
OEM Wired Remote	OEM Display Output	<b>DAB Ready</b>	<b>AMP Control</b>	DUAL CHGR Cont.

CD				CHANGER		GENERAL				
24 Bit DAC	ACDrive	AAC	MP3/WMA	Dual Changer Control	Disc Name Preset	Panel Angle Adjust	Selectable Key illumi. (Red/Green)	Dual Tel/Nav Mute	OEM Wired Remote Out	Remote Control
●	●	●	●	●	●	●	●	●	●	Optional
–	–	●	●	●	●	●	●	●	●	Optional
●	●	●	●	●	●	●	–	●	●	Optional
–	–	●	●	●	●	●	–	●	●	Optional



**NEW** KDC-W5031/Y

WMA/MP3/CD Receiver with Changer Control

Ready for iPod



**F**lip down model with a large FL display. Elegant clean lines to enhance its functionality.

FLIP DOWN	FL	50Wx4 MOSFET	2 PREOUTS	System Q
WMA MP3	CD-R/RW READY	RDS RADIO TEXT	K3i TUNER	OEM Wired Remote
DAB Ready	DUAL CHGR Cont.			

**NEW** KDC-W531Y

WMA/MP3/CD Receiver



**F**lip down model with a large FL display. Elegant clean lines to enhance its functionality.

FLIP DOWN	FL	45Wx4 MOSFET	1 PREOUT	System Q
WMA MP3	CD-R/RW READY	K3i TUNER		

SPECIFICATION

	AUDIO							TUNER
	Max Power	Preout	Preout Output Level	AUX RCA Input	System E's	System Q	Built-in Amp Cut Off	RDS
KDC-W5031/Y	50W x 4 MOSFET	x 2	2.0V	-	-	●	-	Radio Text
KDC-W531Y	45W x 4 MOSFET	x 1	2.0V	-	-	●	-	-
KDC-W4531/Y	50W x 4 MOSFET	x 1	2.0V	-	-	●	-	Radio Text
KDC-W4031/Y	50W x 4 MOSFET	x 1	2.0V	-	-	●	-	Radio Text
KDC-W431GY	45W x 4 MOSFET	x 1	2.0V	-	-	●	-	-

**NEW** KDC-W4531/Y

WMA/MP3/CD Receiver with Changer Control

Ready for iPod



Stunning looks, and a high performance system in your car. Add an external unit such as CD-changer or iPod (via optional interface kit) and further expand your choice of entertainment.

TDF	FL	50Wx4 MOSFET	1 PREOUT	System
WMA MP3	CD-RW READY	RDS RADIO TEXT	K3i TUNER	OEM Wired Remote
DAB Ready	DUAL CHGR - Cont.			

**NEW** KDC-W4031/Y

WMA/MP3/CD Receiver



Stylish looks and powerful sound. A high power built-in MOSFET 50W x4 amplifier delivers outstanding sound quality. Burn your favorite music to CD with MP3 & WMA format and enjoy your own compilation of sounds in your car.

TDF	FL	50Wx4 MOSFET	1 PREOUT	System
WMA MP3	CD-RW READY	RDS RADIO TEXT	K3i TUNER	OEM Wired Remote

**NEW** KDC-W431GY

WMA/MP3/CD Receiver



An affordable MP3 & WMA playback system for your car - Everything you need for your journey ahead.

TDF	FL	45Wx4 MOSFET	1 PREOUT	System
WMA MP3	CD-RW READY	K3i TUNER		

CD				CHANGER		GENERAL				
24 Bit DAC	ACDrive	AAC	MP3/WMA	Dual Changer Control	Disc Name Preset	Panel Angle Adjust	Selectable Key illumi. (Red/Green)	Dual Tel/Nav Mute	OEM Wired Remote Out	Remote Control
-	-	-	●	●	-	-	●	●	●	Optional
-	-	-	●	-	-	-	●	●	-	-
-	-	-	●	●	-	-	●	●	●	Optional
-	-	-	●	-	-	-	●	●	●	-
-	-	-	●	-	-	-	-	●	-	-



RECEIVERS

**NEW** KDC-3031A/AY

CD Receiver



KDC-3031G/GY Key illumination(Green)



Enjoy a powerful and distortion-free sound with built-in MOSFET 45W x4 amplifier. The 14 Segment FL display shows useful RDS information, and wired remote out enables steering wheel control.

TDF	FL	45Wx4 MOSFET	1 PREOUT	System Q
CD-RW READY	RDS RADIO TEXT	K3i TUNER	OEM Wired Remote	

**NEW** KDC-2031SA/SAY

CD Receiver



KDC-2031SG/SGY Key illumination(Green)



An affordable MP3 & WMA playback system for your car - Everything you need for your journey ahead.

TDF	FL	45Wx4 MOSFET	1 PREOUT	System Q
CD-RW READY	K3i TUNER			

MD RECEIVER

KMD-6527 MD Receiver with CD/MD Changer Control

Motorized SLIDE	Fine Dot FL	50Wx4 MOSFET	2 PREOUTS
SYSTEM EsLIGHT	System Q-EX	MDLP	MD Group
RDS RADIO TEXT	K3i TUNER	DUAL ZONE	OEM Wired Remote
OEM Display Output	AUX RCA IN	DAB Ready	AMP Control
DUAL CHGR Cont.	REMOTE Supplied		



Ready for iPod

SPECIFICATION

	AUDIO							TUNER
	Max Power	Preout	Preout Output Level	AUX RCA Input	System E's	System Q	Built-in Amp Cut Off	RDS
KDC-3031A/G/AY/GY	45W x 4 MOSFET	x 1	2.0V	-	-	●	-	Radio Text
KDC-2031SA/SG/SAY/SGY	45W x 4 MOSFET	x 1	2.0V	-	-	●	-	-
	AUDIO							TUNER
	Max Power	Preout	Preout Output Level	AUX RCA Input	System E's	System Q	Built-in Amp Cut Off	RDS
KMD-6527	50W x 4 MOSFET	x 2	2.0V	●	E's Light	Q-EX	●	Radio Text

